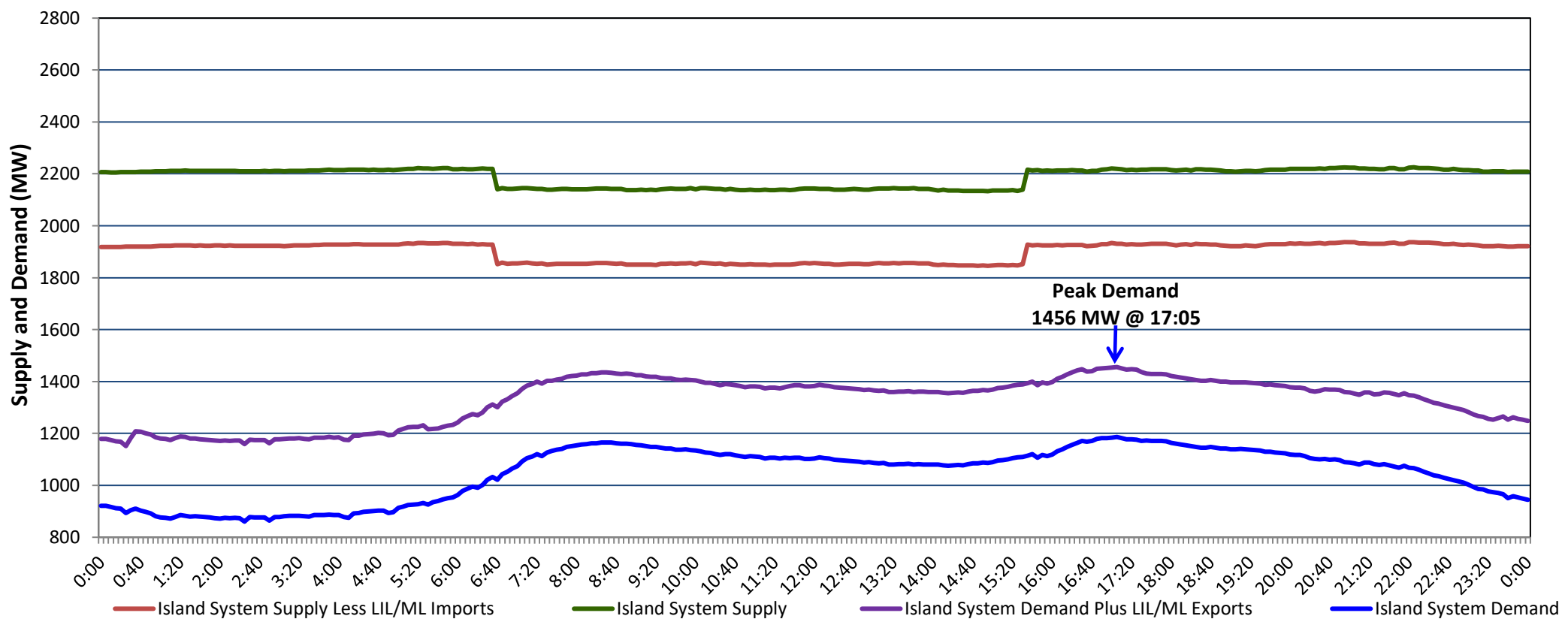


Newfoundland Labrador Hydro (NLH) Supply and Demand Status Report Filed Wednesday, December 07, 2022

Section 1 Island Interconnected System Supply, Demand & Exports Actual 24 Hour System Performance For Tuesday, December 06, 2022



Supply Notes For December 06, 2022

1,2

- A As of 0806 hours, November 10, 2022, St. Anthony Diesel Plant available at 8.7 MW (9.7 MW).
 B As of 0144 hours, November 24, 2022, Holyrood Unit 1 available at 80 MW (170 MW).
 C At 0637 hours, December 06, 2022, Hinds Lake Unit unavailable due to planned outage (75 MW).
 D At 1535 hours, December 06, 2022, Hinds Lake Unit available (75 MW).

Section 2 Island Interconnected Supply and Demand

Wed, Dec 07, 2022	Island System Outlook ³		Seven-Day Forecast		Temperature (°C)		Island System Daily Peak Demand (MW)	
					Morning	Evening	Forecast	Adjusted ⁷
Available Island System Supply: ⁵	2,218	MW	Wednesday, December 7, 2022		3	2	1,490	1,393
NLH Island Generation: ^{4,8}	1,600	MW	Thursday, December 8, 2022		2	3	1,220	1,126
NLH Island Power Purchases: ⁶	125	MW	Friday, December 9, 2022		3	3	1,220	1,126
Other Island Generation:	205	MW	Saturday, December 10, 2022		2	2	1,255	1,160
ML/LIL Imports:	288	MW	Sunday, December 11, 2022		1	1	1,320	1,225
Current St. John's Temperature & Windchill:	2 °C	N/A	°C	Monday, December 12, 2022	1	-1	1,325	1,230
7-Day Island Peak Demand Forecast:	1,490	MW	Tuesday, December 13, 2022		-1	0	1,350	1,254

Supply Notes For December 07, 2022

3

- Notes:
1. Generation outages for running and corrective maintenance are included. These are not unusual for power system operations. They generally do not impact customer supply. The power system operators schedule outages to system equipment whenever possible to coincide with periods when customer demands are low and sufficient supply reserves are available. However, from time to time equipment outages are necessary and reserves may be impacted.
 2. Due to the Island system having no synchronous connections to the larger North American grid, when there is a sudden loss of large generating units there may be a requirement for some customer's load to be interrupted for short periods to bring generation output equal to customer demand. This automatic action of power system protection, referred to as under frequency load shedding (UFLS), is necessary to ensure the integrity and reliability of system equipment. Under frequency events have typically occurred 5 to 8 times per year on the Island Interconnected System and the resultant customer load interruptions are generally less than 30 minutes. With the activation of the Maritime Link frequency controller during the winter of 2018, UFLS events have occurred less frequently.
 3. As of 0800 Hours.
 4. Gross output including station service at Holyrood (24.5 MW) and improved NLH hydraulic output due to water levels (35 MW).
 5. Gross output from all Island sources (including Note 4).
 6. NLH Island Power Purchases include: CBPP Co-Gen, Nalcor Exploits, Rattle Brook, Star Lake, Wind Generation and capacity assistance (when applicable).
 7. Adjusted for curtailable load, market activities and the impact of voltage reduction when applicable.
 8. Due to limitations inherent in the design of combustion turbines, the output of combustion turbines may be reduced in the event that ambient temperatures exceed the threshold

Section 3 Island Peak Demand Information Previous Day Actual Peak and Current Day Forecast Peak

Tue, Dec 06, 2022	Actual Island Peak Demand ⁹	17:05	1,456 MW
Wed, Dec 07, 2022	Forecast Island Peak Demand		1,490 MW

- Notes: 9. Island Demand / LIL / ML Exports (where applicable) is supplied by NLH generation and purchases, plus generation owned and operated by Newfoundland Power and Corner Brook Pulp & Paper (Deer Lake Power, DLP).